



CASTELLO DI RIVOLI

MUSEO D'ARTE CONTEMPORANEA

Piazza Mafalda di Savoia - 10098 Rivoli (Torino) - Italia
tel. +39/011.9565222 – 9565280 fax +39/011.9565231
e-mail: info@castellodirivoli.org – www.castellodirivoli.org

Exhibition	<i>From the Earth to the Moon: Metaphors for Travel (Part I)</i>
Curator	Marcella Beccaria
Press Office	Massimo Melotti, Responsible Manuela Vasco, tel. +39/011.9565209 Silvano Bertalot, tel. +39/011.9565211 fax +39/011.9565231, e-mail: press@castellodirivoli.org
Press Preview	April 2, 2007, 11.30 a.m.
Opening	April 3, 2007, 7.00 p.m.
Dates	April 4 – August 26, 2007
Hours	Tuesday → Thursday 10.00 a.m. – 5.00 p.m. Friday → Sunday, 10.00 a.m. – 9.00 p.m.
Entrance	€ 6.50 full price, € 4.50 reduced price
Location	Castello di Rivoli Museo d'Arte Contemporanea Piazza Mafalda di Savoia – 10098 Rivoli (Turin)
Education services	Education Department tel. +39/011.9565213 – fax +39/011.9565232 e-mail: educa@castellodirivoli.org
Bus service	from Fermi Metro Station to Castello di Rivoli 9.00 a.m. – 10.30 a.m. – 11.30 a.m. – 2.25 p.m. – 4.00 p.m. information tel. +39/011.9565280 GTT toll-free number: tel. 800.019152
Information	tel. +39/011.9565220 www.castellodirivoli.org , e-mail: info@castellodirivoli.org

The exhibition is made possible with the support of CRT Foundation Project for Modern and Contemporary Art



CASTELLO DI RIVOLI

MUSEO D'ARTE CONTEMPORANEA

Piazza Mafalda di Savoia - 10098 Rivoli (Torino) - Italia
tel. +39/011.9565222 – 9565280 fax +39/011.9565231
e-mail: info@castellodirivoli.org – www.castellodirivoli.org

PRESS RELEASE

From the Earth to the Moon: Metaphors for Travel (Part I)

Curator: Marcella Beccaria

Dates: April 4 – August 26, 2007

Press preview: Monday, April 2, 2007 – 11.30 a.m.

Recalling the title of Jules Verne's celebrated novel, the exhibition *From the Earth to the Moon: Metaphors for Travel* presents works that investigate the different meanings of the voyage, a concept that is probed in the expressive investigations of some of the leading figures in contemporary art. In fact, the exhibited works reveal the power of the imagination to open up new territories and the capacity of art to provide models for interpreting or even prefiguring reality.

"A force that can alter the course of history – has written Marcella Beccaria -, the voyage constitutes a richly symbolic territory, capable of assuming many forms and bringing together multiple meanings. From nomadism to migrations, from mythological adventures to pilgrimages, from the crusades to wars of conquest, from the Grand Tour to mass tourism, from scientific explorations on land and sea to the conquest of space and virtual travel, the concept of the voyage changes depending on the era, mirroring its desires, ambitions, fears, and problems. [...] At the same time, the concept of the voyage includes the freedom of mental journeys and the boundless territories of fantasy, replacing physical mobility with the ubiquity of the imagination. In art, as in literature and cinema, the voyage is a theme that links numerous investigations and continues to inspire new ones."

With the intention of showcasing the depth of the Museum's collection and commitment, which is made possible thanks to the ongoing and generous support of the CRT Foundation Project for Modern and Contemporary Art, the exhibition is organized in two parts that will open to the public, respectively, on April 4 and May 23, 2007. The exhibition presents a novel journey through the works in the Museum's collection, many of which are recent acquisitions that are on public view for the first time. Over fifty works will be on display, including discrete pieces and large-scale installations, created from the late 1960s to the present, by artists such as Mario Airò, Giovanni Anselmo, Massimo Bartolini, Gabriele Basilico, Lothar Baumgarten, John Bock, Alighiero Boetti, Jem Cohen, Enzo Cucchi, Roberto Cuoghi, Gino De Dominicis, Thomas Demand, Mario Giacomelli, Rebecca Horn, Roni Horn, Pierre Huyghe, William Kentridge, Anselm Kiefer, Kim Sooja, Mario Merz, Claes Oldenburg - Coosje van Bruggen, Charlemagne Palestine, Giulio Paolini, Thomas Ruff, Thomas Struth, Grazia Toderi, Bill Viola, Yang Fudong, and Gilberto Zorio.

The first part of *From the Earth to the Moon: Metaphors for Travel* opens to the public on April 4.

The exhibited works and installations are by Gilberto Zorio, Mario Merz, Anselm Kiefer, Giulio Paolini, Enzo Cucchi, Thomas Ruff, Alighiero Boetti, Giovanni Anselmo, Gino De Dominicis, Rebecca Horn, Charlemagne Palestine, Jem Cohen, Massimo Bartolini, Lothar Baumgarten, Bill Viola, Gabriele Basilico, Yang Fudong, Mario Airò, Kim Sooja, Claes Oldenburg and Coosje van Bruggen, and Roberto Cuoghi.

The theme of the voyage is interpreted through key works in the collection, such as *Igloo con albero (Igloo with Tree)*, 1968-69 and *Igloo (Tenda di Gheddafi) (Igloo – Gaddafi's Tent)*, 1968-81, by Mario Merz, where the artist creates an actual habitable space, inspired by the architecture of nomadic populations. The voyage as metaphor returns as a category of the spirit in *Cette obscure clarté qui tombe des étoiles (That Obscure Clarity that Falls from the Stars)*, 1996, a work by Anselm Kiefer that alludes to the regeneration of matter. New acquisitions in the exhibition include *Isolde's Ascension (The Shape of Light in the Space after Death) (L'ascensione di Isotta – La forma della luce nello spazio dopo la morte)*, 2005, by Bill Viola. In the video installation by this American artist, installed for the first time in the 18th-century Savoy chapel, the ascension of Isolde toward divine light becomes a symbolic existential voyage where the power of love transcends death.

Travel is also undertaken through images of a city devastated by war, as in the photographic series *Beirut*, created by Gabriele Basilico in 1991. The artist's lens recreates an emblematic dramatic voyage through the metropolis, which becomes a metaphor for the contemporary world suspended between violence and a desire for life, between past and future.

The second part of the exhibition, installed on the third floor, will open on May 22.

The entire exhibition, including both the second and third floors, will remain open to the public until August 26.

The exhibition is made possible thanks to the support of the CRT Foundation Project for Modern and Contemporary Art

Information:

Press Office, Castello di Rivoli Museo d'Arte Contemporanea, tel. +39/011.9565209-211, fax +39/011.9565231
e-mail: press@castellodirivoli.org, s.bertalot@castellodirivoli.org

Dalla terra alla luna: metafore di viaggio - parte I e II
(From the Earth to the Moon: Metaphors for Travel – Parts I and II)
Elenco delle opere esposte / Checklist of exhibited works

Parte I – Secondo piano (4 aprile – 26 agosto 2007)

SALA 18

GILBERTO ZORIO

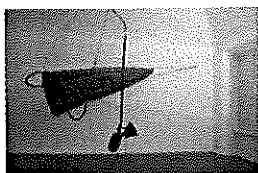
(Andorno Micca, Vercelli, 1944)

Barca nuragica (Nuraghic Boat), 2000

giunchi intrecciati, compressore, alluminio, lampada, sonoro
woven reeds, compressor, aluminum, lamp, sound

450 x 600 x 640 cm / 177 ¾ x 236 ¼ x 252 in.

Castello di Rivoli Museo d'Arte Contemporanea



MARIO MERZ

(Milano, 1925-2003)

Igloo con albero (Igloo with Tree), 1968-1969

tubolare in ferro, vetri, stucco, ramo / *iron tubing, glass, plaster, branch*

igloo, h. 100 cm x Ø 200 cm; ramo, h. 320 cm

h. 39 ½ x Ø 78 ¾ in.; branch, h. 126 in.

Collezione / *Collection Margherita Stein*

Proprietà / *Property Fondazione CRT Progetto Arte Moderna e Contemporanea*

Deposito permanente / *Permanent loan*

Castello di Rivoli Museo d'Arte Contemporanea, Rivoli-Torino

GAM – Galleria Civica d'Arte Moderna e Contemporanea, Torino



Igloo (Tenda di Gheddafi) (Igloo – Gaddafi's Tent), 1968-1981

tubolare in ferro, acrilico su tela di juta / *iron tubing, acrylic on jute canvas*

h. 240 x Ø 500 cm / *h. 94 ½ x Ø 197 in.*

Castello di Rivoli Museo d'Arte Contemporanea

ANSELM KIEFER

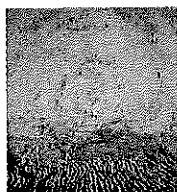
(Donaueschingen, Germania / *Germany, 1945*)

Cette obscure clarté qui tombe des étoiles (Questo oscuro chiarore che cade dalle stelle / That Obscure Clarity that Falls from the Stars), 1996

acrilico, olio, emulsioni, semi di girasole su tela / *acrylic, oil, emulsion, sunflower seeds on canvas*

5 pannelli, 524 x 562 cm / *5 panels, 206 x 221 in.*

Castello di Rivoli Museo d'Arte Contemporanea



GIULIO PAOLINI

(Genova, 1940)

Astrolabe (F. P.) (Astrolabio – F.P.), 1967

sfere in plexiglas, mappamondo / *Plexiglas spheres, globe*

sfere in plexiglas: Ø 54,5 cm, Ø 38 cm, mappamondo: Ø 36 cm, settore

di 1/4 di sfera: 17 x 47 x 18 cm, settore di 1/8 di sfera: 17 x 18 x 18 cm

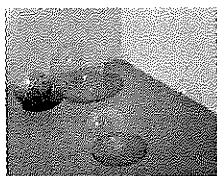
Plexiglas spheres: Ø 21 ⁷/₁₆ in., Ø 14 ¹⁵/₁₆ in., globe: Ø 14 ¹³/₁₆ in., 1/4 sphere

section: 6 ¹¹/₁₆ x 18 ¹/₂ x 7 ¹/₁₆ in., 1/8 sphere section: 6 ¹¹/₁₆ x 7 ¹/₁₆ x 7 ¹/₁₆ in.

Castello di Rivoli Museo d'Arte Contemporanea

Deposito permanente / *Permanent loan*

Fondazione CRT Progetto Arte Moderna e Contemporanea



SALA 19

ENZO CUCCHI

(Morro d'Alba, Ancona, 1949)

Eroe senza testa (Headless Hero), 1981

olio su tela / *oil on canvas*

203 x 254 cm / 80 x 100 in.

Castello di Rivoli Museo d'Arte Contemporanea

Deposito permanente / *Permanent loan*

Fondazione CRT Progetto Arte Moderna e Contemporanea



Vitebsk-Harar, 1984

smalto su lamiera di ferro / *enamel on sheet-iron*

400 x 500 cm / 157 ¹/₂ x 197 in.

Castello di Rivoli Museo d'Arte Contemporanea



La deriva del vaso (The Drift of the Vase), 1984-1985

olio su tela / *oil on canvas*

280 x 320 cm / 110 ¹/₄ x 126 in.

Castello di Rivoli Museo d'Arte Contemporanea

Deposito permanente / *Permanent loan*

Fondazione CRT Progetto Arte Moderna e Contemporanea



THOMAS RUFF

(Zell am Harmersbach, Germania / *Germany, 1958*)

02h 36m/40°, 1990

stampa cromogenica / *chromogenic print*

260 x 188 cm / 102 ³/₈ x 74 in.

Castello di Rivoli Museo d'Arte Contemporanea



SALA 20

ALIGHIERO BOETTI

(Torino, 1940 – Roma, 1994)

Mappa (Map), 1971-1973

tela in lino, ricamo in cotone policromo / *linen, embroidery in colored cottons*

232 x 380 cm / 91 ½ x 149 ½ in.

Castello di Rivoli Museo d'Arte Contemporanea

Deposito a lungo termine / *Long term loan*

Collezione / *Collection Annemarie Sauzeau Boetti*



GIOVANNI ANSELMO

(Borgofranco d'Ivrea, Torino, 1934)

Verso oltremare (Towards Ultramarine), 1984

pietra di Luserna, cavo d'acciaio, pittura acrilica su parete / *Luserna stone, steel cable, acrylic paint on wall*

321,8 x 131 x 2,8 cm / 126 ¾ x 51 ½ x 1 in.

Castello di Rivoli Museo d'Arte Contemporanea



Mentre la terra si orienta (While the Earth Finds its Bearings), 1967-2007

terra, ago magnetico / *earth, magnetic needle*

dimensioni variabili / *variable dimensions*

Courtesy l'artista / *the artist* e / *and* Tucci Russo Studio per l'Arte Contemporanea, Torre Pellice

SALA 21

GINO DE DOMINICIS

(Ancona, 1947 – Roma, 1998)

Senza titolo (Urvasi e Gilgamesh) (Untitled - Urvasi and Gilgamesh), 1988

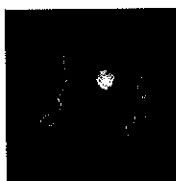
tempera, matita su tavola / *tempera, crayon on board*

240 x 240 cm / 94 ½ x 94 ½ in.

Castello di Rivoli Museo d'Arte Contemporanea

Deposito permanente / *Permanent loan*

Fondazione CRT Progetto Arte Moderna e Contemporanea



SALA 22

REBECCA HORN

(Michelstadt, Germania / *Germany*, 1944)

Miroir du Lac (Specchio del lago / Mirror of the Lake), 2004

ferro, specchio, lampada, proiettore, diapositiva, motore, vetro
iron, mirror, lamp, slide projector, slide, motor, glass

specchio basculante, Ø 184 cm / *pivoted mirror, Ø 72 ½ in.*

Castello di Rivoli Museo d'Arte Contemporanea



SALA 23

CHARLEMAGNE PALESTINE

(New York, 1947)



Island Song – Island Monologue (Canzone dell'isola – Monologo dell'isola), 1976

video, bianco e nero, sonoro, 31' 34" / *video, black and white, sound, 31 min. 34 sec.*

Castello di Rivoli Museo d'Arte Contemporanea

Acquistato con il contributo di / *Purchased with the contribution of*
Compagnia di San Paolo

SALA 24

JEM COHEN

(Kabul, 1962)



This Is a History of New York (Questa è una storia di New York), 1988

video, bianco e nero, sonoro, 23' / *video, black and white, sound, 23 min.*

Castello di Rivoli Museo d'Arte Contemporanea

Acquistato con il contributo di / *Purchased with the contribution of*
Compagnia di San Paolo

SALA 25

MASSIMO BARTOLINI

(Cecina, 1962)



Pavimento ad occhi chiusi (Floor with Eyes Closed), 1997

legno, fettuccia per tende / *wood, curtain cord*

222 x 544 cm / 87 ³/₈ x 214 ³/₁₆ in.

Castello di Rivoli Museo d'Arte Contemporanea

Deposito permanente / *Permanent loan*

Fondazione CRT Progetto Arte Moderna e Contemporanea

SALA 26

LOTHAR BAUMGARTEN

(Rheinsberg, Germania / *Germany*, 1944)

Yurupari - Stanza di Rheinsberg (Yurupari – Rheinsberg Room), 1984

pigmento puro, penne di uccelli, tempera su parete

pure pigment, bird feathers, tempera on wall

dimensioni determinate dall'ambiente / *dimensions determined by the space*



Castello di Rivoli Museo d'Arte Contemporanea

SALA 27 - CAPPELLA

BILL VIOLA

(New York, 1951)



Isolde's Ascension (The Shape of Light in the Space after Death) (L'ascensione di Isotta – La forma della luce nello spazio dopo la morte), 2005

video, schermo al plasma, colore, suono stereo, 10' 30"

color high definition video on plasma display mounted on wall, color, stereo sound, 10 min. 30 sec.

Castello di Rivoli Museo d'Arte Contemporanea

Deposito permanente / *Permanent loan*

Fondazione CRT Progetto Arte Moderna e Contemporanea

SALA 28

GABRIELE BASILICO

(Milano, 1944)



Beirut (Rue Dakar), 1991

stampe bianco e nero ai sali d'argento su carta baritata con viraggio conservativo / *black and white Silver-salt prints on baritated paper with toner fixative*

105 x 127 cm / 41 ½ x 50 in.

Castello di Rivoli Museo d'Arte Contemporanea



Beirut (Rue El Maarad), 1991

stampe bianco e nero ai sali d'argento su carta baritata con viraggio conservativo / *black and white Silver-salt prints on baritated paper with toner fixative*

105 x 127 cm / 41 ½ x 50 in.

Castello di Rivoli Museo d'Arte Contemporanea



Beirut (Place Martyres 1), 1991

stampe bianco e nero ai sali d'argento su carta baritata con viraggio conservativo / *black and white Silver-salt prints on baritated paper with toner fixative*

105 x 127 cm / 41 ½ x 50 in.

Castello di Rivoli Museo d'Arte Contemporanea



Beirut (Rue Abdel Malek), 1991

stampe bianco e nero ai sali d'argento su carta baritata con viraggio conservativo / *black and white Silver-salt prints on baritated paper with toner fixative*

105 x 127 cm / 41 ½ x 50 in.

Castello di Rivoli Museo d'Arte Contemporanea



Beirut (Rue Allemby/Fakhry Bay), 1991

stampe bianco e nero ai sali d'argento su carta baritata con viraggio conservativo / *black and white Silver-salt prints on baritated paper with toner fixative*

105 x 127 cm / 41 ½ x 50 in.

Castello di Rivoli Museo d'Arte Contemporanea



Beirut (Place Martyres 2), 1991

stampe bianco e nero ai sali d'argento su carta baritata con viraggio conservativo / *black and white Silver-salt prints on baritated paper with toner fixative*

105 x 127 cm / 41 ½ x 50 in.

Castello di Rivoli Museo d'Arte Contemporanea



Beirut (Rue Syrie), 1991

stampe bianco e nero ai sali d'argento su carta baritata con viraggio conservativo / *black and white Silver-salt prints on baritated paper with toner fixative*

105 x 127 cm / 41 ½ x 50 in.

Castello di Rivoli Museo d'Arte Contemporanea

SALA 29

YANG FUDONG

(Pechino / Beijing, 1971)

Dengdai she de suxing / Waiting for the Snake to Wake Up (Aspettando il risveglio del serpente), 2005

video installazione a 10 canali; 10 DVD sincronizzati, 2 proiezioni, 8 schermi al plasma, colore, sonoro, 8'

10-channel video installation; 10 synchronized DVDs, 2 projections, 8 plasma displays, color, sound, 8 min.

musica di / *music by* Wang Wen Wei

Castello di Rivoli Museo d'Arte Contemporanea

Deposito permanente/ *Permanent loan*

Fondazione CRT Progetto Arte Moderna e Contemporanea



SALA 30

MARIO AIRÒ

(Pavia, 1961)

Notti e nebbie (Nights and Fogs), 1998

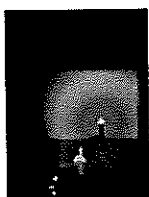
legno di balsa, proiettore, diapositiva, lampadina

balsa wood, slide projector, slide, light bulb

dimensioni determinate dall'ambiente / *dimensions determined by the space*

Castello di Rivoli Museo d'Arte Contemporanea

Donazione / *Gift* Associazione Artissima



SALA 31

KIM SOOJA

(Taegu, Corea del Sud / *South Korea*, 1957)

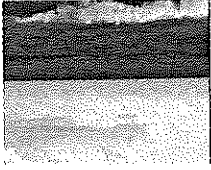
Bottari: Alfa Beach, 2001

proiezione video a ciclo continuo, colore, muto, 6' 18"

looping video projection, color, silent, 6 min. 18 sec.

Castello di Rivoli Museo d'Arte Contemporanea

Deposito permanente / *Permanent loan* - Regione Piemonte



SALA 32

CLAES OLDENBURG - COOSJE VAN BRUGGEN

(Stoccolma / *Stockholm*, 1929; Gröningen, Olanda / *The Netherlands*, 1942)

From the Entropic Library (Dalla biblioteca entropica), 1989

tela, legno, alluminio, polistirene espanso, resina, pittura al lattice

cloth, wood, aluminum, expanded polystyrene; coated with resin and painted with latex

360 x 686 x 254 cm, dimensioni variabili / *11 ft. 9 3/4 in. x 22 ft. 6 1/16 in. x 8 ft. 4 in., variable dimensions*

Musée d'Art Moderne, Saint-Etienne, Francia / *France*



SALA 33

ROBERTO CUOGHI

(Modena, 1973)

Mbube, 2005

composizione per canto e strumenti, 3' / *composition for voice and instruments, 3 min.*

Castello di Rivoli Museo d'Arte Contemporanea



Parte II – Terzo piano (23 maggio – 26 agosto 2007)

ATRIO

JOHN BOCK

(Gribbohm, Germania / *Germany*, 1965)

Astronaut (Astronauta), 2003

video, colore, sonoro, 22' 30" / *video, color, sound, 22min. 30 sec.*

Castello di Rivoli Museo d'Arte Contemporanea

Donazione / *Gift* Compagnia di San Paolo



THOMAS STRUTH

(Geldern, Germania / *Germany*, 1954)

Florence, Audience 9 (Gallerie dell'Accademia) (Firenze, spettatori 9 – Gallerie dell'Accademia), 2004

stampa cibachrome / *cibachrome print*

179,5 x 297 cm / 70 ¹¹/₁₆ x 116 ¹⁵/₁₆ in.

Castello di Rivoli Museo d'Arte Contemporanea



Florence, Audience 11 (Gallerie dell'Accademia) (Firenze, spettatori 11 – Gallerie dell'Accademia), 2004

stampa cibachrome / *cibachrome print*

185 x 297 cm / 72 ¹³/₁₆ x 116 ¹⁵/₁₆ in.

Castello di Rivoli Museo d'Arte Contemporanea

Deposito permanente / *Permanent loan*

Fondazione CRT Progetto Arte Moderna e Contemporanea



SALA 34

MARIO GIACOMELLI

(Senigallia, Ancona, 1925-2000)

Paesaggi (Landscapes), 1955-1992

stampa gelatino bromuro d'argento / *gelatin silver prints*

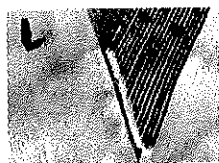
26 fotografie / *photographs*

30,5 x 40,6 cm ciascuna / 12 x 16 in. each

Castello di Rivoli Museo d'Arte Contemporanea

Acquistato con il contributo di / *Purchased with the contribution of*

BNL Banca Nazionale del Lavoro



Storie di terra (Stories of Earth), 1984-1985

stampa gelatino bromuro d'argento / *gelatin silver prints*

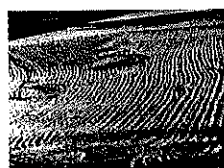
2 fotografie / *photographs*

30,5 x 40,6 cm ciascuna / 12 x 16 in. each

Castello di Rivoli Museo d'Arte Contemporanea

Acquistato con il contributo di / *Purchased with the contribution of*

BNL Banca Nazionale del Lavoro



SALA 35

GRAZIA TODERI

(Padova, 1963)

Il decollo (The Take Off), 1998



proiezione video a ciclo continuo, DVD, colore, suono stereo / *looping video projection, DVD, color, stereo sound*

dimensioni determinate dall'ambiente / *dimensions determined by the space*

Castello di Rivoli Museo d'Arte Contemporanea

SALA 36

WILLIAM KENTRIDGE

(Johannesburg, 1945)

7 Fragments for Georges Méliès (7 frammenti per Georges Méliès), 2003

proiezione video, film in 16 mm e 35 mm basato su riprese "dal vero", video e disegno animato trasferito su video e DVD, 14' 50" / *video projection, 16 mm and 35 mm film based on live-action film, video and animated drawing, transferred to video and DVD, sound, 14 min. 50 sec.*

Castello di Rivoli Museo d'Arte Contemporanea

Invisible Mending (Rammendo invisibile)

proiezione video, 1' 30" / *video projection, 1 min. 30 sec.*

Balancing Act (Atto di equilibrismo)

proiezione video, 1' 20" / *video projection, 1 min. 20 sec.*

Tabula rasa I

proiezione video, 2' 50" / *video projection, 2 min. 50 sec.*

Tabula rasa II

proiezione video, 2' 10" / *video projection, 2 min. 10 sec.*

Moveable Assets (Beni mobili)

proiezione video, 2' 40" / *video projection, 2 min. 40 sec.*

Auto-didact (Autodidatta)

proiezione video, 2' 30" / *video projection, 2 min. 30 sec.*

Feats of Prestidigitation (Trionfi di prestidigitazione)

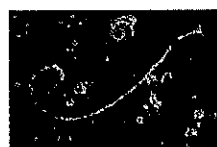
proiezione video, 1' 50" / *video projection, 1 min. 50 sec.*



Journey to the Moon (Viaggio sulla luna), 2003

proiezione video, film 16 mm e 35 mm trasferiti su video e DVD, 7' 10" / *16 mm and 35 mm, film video and DVD transfer, 7 min. 10 sec.*

Castello di Rivoli Museo d'Arte Contemporanea



Day for Night (Il giorno per la notte), 2003

proiezione video, film 16 mm trasferito su video e DVD, 7' 16 mm film video and DVD transfer, 7 min.

Castello di Rivoli Museo d'Arte Contemporanea

SALA 37

RONI HORN

(New York, 1955)

Pooling You (Inabissati), 1996-1997

7 elementi, stampa litografica su carta non patinata

7 elements photolithography on uncoated paper

106,5 x 147,3 cm ciascuna / 42 x 58 in. each

Courtesy Galleria Raffaella Cortese, Milano



THOMAS DEMAND

(Monaco di Baviera / Munich, 1964)

Grotto (Grotta), 2006

stampa fotografica a colori, Diasec / C-print, Diasec

400 x 285 cm / 77 ¹⁵/₁₆ x 173 ¹/₄ in.

Castello di Rivoli Museo d'Arte Contemporanea

Deposito permanente / Permanent loan

Fondazione CRT Progetto Arte Moderna e Contemporanea



SALA 38

PIERRE HUYGHE

(Parigi / Paris, 1962)

A Journey That Wasn't (Un viaggio mai accaduto), 2005

proiezione video, film riversato da 16 mm, colore, sonoro, 21' 43",

poster / Super 16mm film and high-definition video transferred to high-definition video, color, sound, 21 min. 43 sec., poster

Castello di Rivoli Museo d'Arte Contemporanea

Deposito permanente / Permanent loan

Fondazione CRT Progetto Arte Moderna e Contemporanea

